



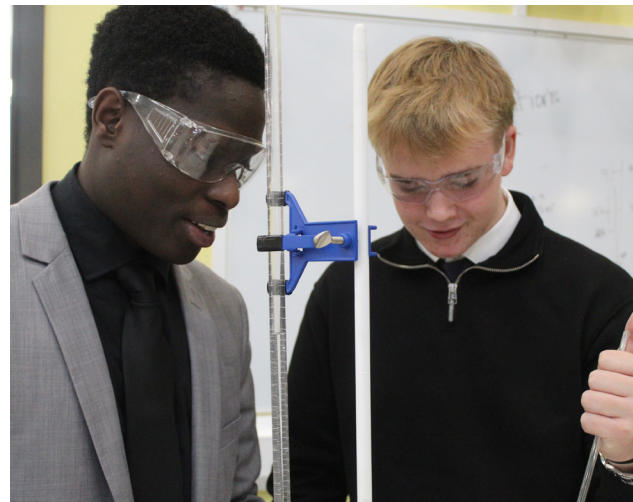
Leigh Academy  
**Longfield**

'Outstanding'

Ofsted 2018



## Sixth Form Prospectus



**Achieving Beyond Expectations**

# Leigh Academy Longfield is part of Leigh Academies Trust



Leigh Academies Trust is one of the country's largest and most-established multi-academy trusts operating across Kent, Medway and South East London. It contains primary, secondary and special academies and is highly inclusive and successful. Our mission is to deliver "education for a better world" by ensuring that young people in our academies have an excellent start in life regardless of their background or ability.

## Our Values

### **We care -**

about our pupils through our human scale approach to education, our staff and their well-being and the communities that we serve, driven by our high ideals and strong moral values.

### **We have boundless ambition -**

to achieve excellence for all and create confident young adults with high levels of resilience and integrity.

### **We work together -**

as one team in the belief that we are greater than the sum of our parts. We foster an enterprising culture through collaboration and in close partnership with industry and other educators.

### **We keep getting better -**

using our 'can-do' attitude towards continuous improvement and innovation.



For admission enquiries telephone: 01474 700 700  
or email: [info@longfield.latrust.org.uk](mailto:info@longfield.latrust.org.uk)



# Contents

Use our contents page to navigate your way through our prospectus

## Principal's Welcome

A message from Felix Donkor

## Head of Sixth Form's Welcome

A message from Mitchell Jarvis

## Introduction

We are one of the top-performing sixth form provisions in Kent

## What course will I study?

Your options at Post-16

## T-Levels

The next level qualification

## Personal development programme

Our approach to study

## Enrichment

Opportunities outside the classroom

## Destinations

Where our alumni went next

## Further information

Visit our website

# Welcome



‘Senior leaders  
and governors are  
ambitious for the  
school and  
its pupils’  
Ofsted 2018

## Achieving Beyond Expectations

We are delighted to welcome you to Leigh Academy Longfield. The academy has a long tradition as a popular secondary school choice for local families. It is recognised by Ofsted as being Good with an Outstanding sixth form. Our students achieve well, and we have a positive learning environment as well as strong links within our community. At Leigh Academy Longfield, we care, we are respectful, we believe in each other, we work hard, and we have boundless aspirations. Staff here are ambitious for the school and all its students. The excellent relationships that exist between our students and staff enables us to establish a warm and welcoming community dedicated to learning. Furthermore, our broad and balanced curriculum, underpinned by International Baccalaureate principles, helps to prepare our students to effectively participate in a democratic society. We are extremely proud of our state-of-the-art facilities and the opportunities these afford our students to ‘Achieve Beyond Expectations’.

I sincerely hope that you visit our website so that you can enjoy a virtual tour of our school. I hope also that our website gives you further insights into our vision and ethos. More importantly, I look forward to welcoming you to the physical school so that you can experience what makes us so special.

Felix Donkor,  
Principal



# Achieving Beyond Expectations



## Welcome

At Leigh Academy Longfield our aim is to support students to be happy and healthy so that they can achieve the best grades possible and progress on to their chosen pathway. We are incredibly proud that our student outcomes place Leigh Academy Longfield in the top 10% of the country for post-16 study.

Students at Leigh Academy Longfield benefit from small classes with highly experienced and dedicated teachers. Our pastoral support is second to none, and ensures students are given individual guidance throughout their studies.


If you are looking for an environment where you can truly flourish and achieve your potential, we would love to welcome you to join our highly successful and growing post-16.

I sincerely hope that you will choose to join us at Leigh Academy Longfield.

Mr Mitchell Jarvis  
Director of Post-16

‘Provision in the sixth form is outstanding... students have study programmes very well suited to their needs, resulting in excellent progress’

Ofsted 2018

A photograph of two young women sitting at a desk in a library. The woman on the left, with long blonde hair, is smiling and pointing at an open book. The woman on the right, with dark hair and glasses, is looking down at the book. Bookshelves filled with books are visible in the background.

‘We are justifiably delighted to have one of the top-performing sixth-form provisions in Kent and receiving the ‘outstanding’ recognition from Ofsted is the ultimate accolade. The report has recognised that our focus on ensuring that students are on the post-16 courses best suited to their specific needs results in their making excellent progress’

Leigh Academy Longfield

# INTRODUCTION

During our last Ofsted (in April 2018), the inspection team were not the only people to recognise the exceptional quality of our sixth form. The post-16 students that they spoke to during their visit were ‘highly positive about their sixth form and would wholeheartedly recommend it to others’. This reflects the positive culture developed by leaders and sixth form staff, who are consistently supportive of students and prepared to ‘go the extra mile’ whilst also having very high expectations. In return ‘students’ behaviour in the sixth form is exemplary. They are punctual, attend well and have excellent personal and social skills’.

The report recognises that leaders of the academy are highly ambitious for all of the students but also that they do not limit that ambition to the outcomes of public examinations: preparing our students for life is equally important to everyone at the academy.

Simon Beamish, CEO of Leigh Academies Trust, said:

*“We are especially pleased with the top marks Ofsted awarded Longfield for its sixth form. Post-16 results at Longfield have been among the best of any non-selective school in Kent for several years, so this accolade is much deserved.”*





‘Teachers’ subject knowledge is a major strength of the provision and enables teachers to deepen students’ understanding through highly insightful and effective questioning’  
Ofsted 2018

# What course will I study?

The curriculum offer at Leigh Academy Longfield Post-16 comprises of a combination of A Level and vocational options and is reviewed every year, offering students an excellent range of traditional academic subjects alongside vocational Level 3 qualifications. Many students choose a combination of the two, enjoying the slightly different study approaches to work and assessment.

Students are encouraged to make applications for three A Levels or equivalent over a two year programme (the option of taking four A Level subjects can be considered on an individual basis). The majority of our courses follow a linear path and are externally assessed at the end of the full two years of study. In order to ensure student progress is tracked and monitored, there are rigorous internal examinations at the end of year 12.

As a school, we work closely with students in year 11 to determine the best programme of study to meet individual needs alongside our curriculum offer, and in line with ongoing reforms. This is done through regular assemblies and careers guidance interviews with individuals as needed. We welcome applications from external students and will arrange a meeting with each student to discuss the options they have chosen for post-16 and ensure suitability for the course.





# T-Levels

T-Levels are a new type of course which have been developed in collaboration with employers, providing a balance of classroom learning and real-world experience following completion of GCSEs. One T-Level runs for two years and is equivalent to three A Levels.

T-Levels are a technical option designed to meet the needs of industry and prepare students for work, future training or study. Depending on their T-Level of choice, students will find that 80% of their time is spent onsite at their academy in either a classroom, laboratory or workshop environment gaining the skills that employers need. The other 20% of their time will be spent gaining meaningful on-the-job experience through an industry placement where they can put these skills into action.

For students, T-Levels provide valuable experiences in the workplace. For employers, T-Levels provide an opportunity to see and support new talent within their industry first-hand.

Although T-Levels may seem similar to apprenticeships, they do differ quite significantly. If a student chooses to become an apprentice they will typically focus on learning a particular role, and will spend 80% of their time in the workplace and 20% in the classroom – the exact reverse of a T-Level. An apprentice is employed and will be paid for their time at work, whereas the majority of T-Level placements will be unpaid.

A-Levels are an academic option which typically leads on to further study at university or college. Similar in style to GCSEs, A-Levels are entirely classroom based.

## Which T-Level courses do we offer?

### T-Level Finance

- Students will develop an understanding of a broad range of issues relevant to the sector, including the business environment, the fundamentals of financial accounting, professionalism and ethics, data driven innovation and analytics and design thinking.

### T-Level Catering

- Students will develop an understanding of a broad range of issues relevant to the sector, including culinary quality, kitchen operations, health, safety and security, nutritional analysis and food safety practices and procedures. In addition, there will be team working in the business environment, including risk assessment, waste management principles and supply chain management.

For more information on T-Levels, please visit our website at [latticelevels.org.uk](http://latticelevels.org.uk).

The benefits of studying T-Levels include:

- Industry-specific technical knowledge and practical skills
- A minimum of 45 days' placement in a student's chosen industry or occupation
- Common workplace skills
- Industry-specific technical knowledge and practical skills





The move to GCSE to A Level study is a challenging one, the factors which determine students' A Level successes are their attitudes, routines and approaches to study.

## Personal Development Programme

All of our post-16 students are part of dedicated post-16 tutor groups, led by teachers who are dedicated to supporting our students while they navigate this new path into independent study and adulthood. The tutor programme provides a structured environment for them to learn from and support each other to achieve the very best outcomes.

Our Personal Development Programme has been designed to prepare students for the rigour of sixth form study, prepare them for the working world and offer a programme of PSHE that enables them to make sensible and informed decisions on their own futures. The two year programme offers a chance for students to consider the pathways available to them after sixth form; a safe environment for discussions on topics that affect young people in the world today such as social media and the law; as well as sexual health and healthy living and the opportunity to engage in topics such as democracy and voting; gaining a first aid qualification and preparing CVs and successful UCAS applications.

We encourage students to engage in a number of charity events throughout the year, and take part in a Community Tuesday initiative that allows our students to be role models and buddies to lower school students, encouraging younger students to engage with their studies and improve their social skills.

We deliver high quality social, moral, spiritual and cultural content via our tutor programme and our regular assemblies at which we welcome guest speakers on a number of different topics.

**'It is your behaviours, not your intelligence, that will determine your results'**

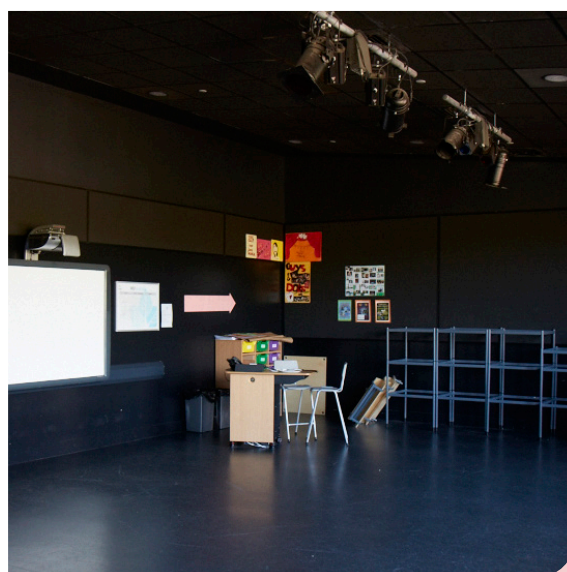
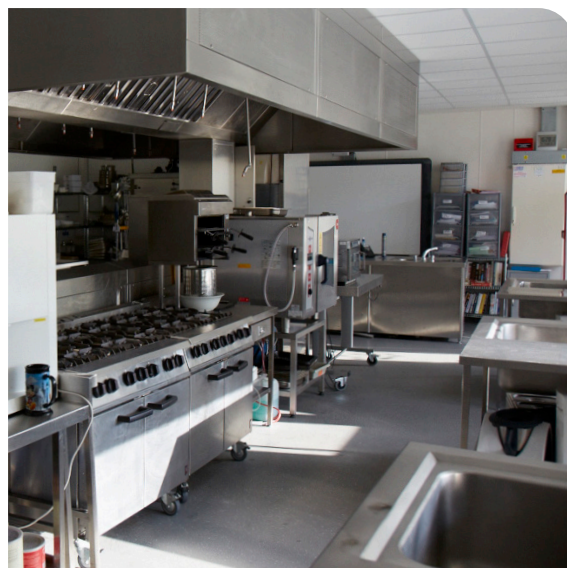
Oakes and Griffin (2016) <sup>1</sup>

---

<sup>1</sup> Oakes, S. and Griffin, M. (2016) A level mindset: 40 activities for transforming student commitment, motivation and productivity. United Kingdom: Crown House Publishing.

‘Pupils listen to teachers and each other respectfully, and many pupils are confident to share their ideas’

Ofsted 2018





# Enrichment

As part of our personal development programme, students enjoy a plethora of enrichment opportunities at various points during the year. This includes a wide range of trips and visits, including the opportunity to attend residential trips when these arise. These have included:

- The Duke of Edinburgh Award
- Drama and musical productions
- Trips and visits related to the curriculum (e.g. film studies to Harry Potter Studios)
- University taster days
- Student team building trips, for example trips to escape rooms
- Reciprocal reading and mentoring programmes on our Community Tuesdays



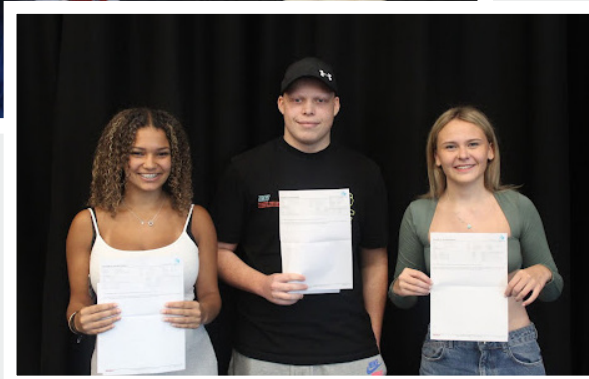
# Destinations

We are very proud of our alumni and continue to build a network of former students to support in the advice given to students as they navigate their way through the post-18 pathways. On completion of your studies, you could follow in the footsteps of some of our alumni who went on to:

- University of Greenwich
- Royal Central School Of Speech and Drama
- University of Kent
- City, University of London
- Nottingham Trent University
- Buckinghamshire New University
- UWE Bristol

- Oxford Brookes University
- University of Reading
- Edge Hill University
- University of Lincoln
- Nottingham Trent University
- Canterbury Christ Church University
- University of Sussex
- University of Southampton

A number of our alumni have also embarked on exciting new adventures through gap year programmes, such as travelling the globe, or joining initiatives such as Camp America.







For admission enquiries phone:  
01474 700700 ext. 700 or email:  
[post16@longfield.latrust.org.uk](mailto:post16@longfield.latrust.org.uk)

## Making your application

When making your application, it is important that you research your options carefully - discuss the subjects that you are interested in with teachers and your family. Find out which type of course would be the most suitable for you: the more examination based subjects, or the subjects which offer an equal balance between examination and coursework.

As part of our application process, all applicants will be invited to attend an interview where your strengths and options will be discussed. Students should submit applications early to avoid disappointment.

We encourage applicants to submit an application to us by December 2025, however we do accept applications throughout the academic year. Please apply online via our [website](#).

## Alumni

Leigh Academy Longfield values the opportunity to keep in touch with former students, celebrating achievements and successes, both personally and professionally. As part of Leigh Academies Trust, we are keen to foster a thriving community of former students who can help to shape the lives and experiences of current students.

By joining our alumni, former students are offered the opportunity to network with old friends as well as keeping up-to-date with all the news and events from the academy.

Please visit our website for more information:  
[leighacademylongfield.org.uk/lat-alumni](http://leighacademylongfield.org.uk/lat-alumni)





Leigh Academy  
Longfield

# Further INFORMATION

Please visit our academy website:

[Leigh Academy Longfield](#)

Please visit our Facebook page to keep up to date with events,  
announcements and more:

[Leigh Academy Longfield on Facebook](#)





Main Road  
Longfield  
Kent DA3 7PH

01474 700 700  
[info@longfield.latrust.org.uk](mailto:info@longfield.latrust.org.uk)  
[leighacademylongfield.org.uk](http://leighacademylongfield.org.uk)

**Achieving Beyond Expectations**



**LEIGH**  
Academies Trust

Education for a better world

Chief Executive: Simon Beamish BA (Hons) MSc PGCE NPQH NLE FCCT

Carnation Road, Strood, Rochester, Kent ME2 2SX

01634 412200 | fax: 01634 412201

[info@latrust.org.uk](mailto:info@latrust.org.uk) | [leighacademiestrust.org.uk](http://leighacademiestrust.org.uk)

Leigh Academies Trust is a registered company (company no 2336587) and an exempt charity.