



Leigh Academy
Longfield



Prospectus

Achieving Beyond Expectations

Leigh Academy Longfield is part of Leigh Academies Trust



Leigh Academies Trust is one of the country's largest and most established multi-academy trusts operating across Kent, Medway and South East London. It contains primary, secondary and special academies and is highly inclusive and successful. Our mission is to deliver "education for a better world" by ensuring that young people in our academies have an excellent start in life regardless of their background or ability.

Our Values

We care

about our pupils through our human scale approach to education, our staff and their well-being and the communities that we serve, driven by our high ideals and strong moral values.

We have boundless ambition

to achieve excellence for all and create confident young adults with high levels of resilience and integrity.

We work together

as one team in the belief that we are greater than the sum of our parts. We foster an enterprising culture through collaboration and in close partnership with industry and other educators.

We keep getting better

using our 'can-do' attitude towards continuous improvement and innovation.



For admission enquiries telephone: 01474 700 700
or email: info@longfield.latrust.org.uk

'The curriculum enables pupils to pursue their interests
and prepares them well for their next steps'

Ofsted 2018



Contents

Use our contents page to navigate your way through our prospectus

Principal's Welcome
A message from Felix Donkor

Introduction
Our 'small school' structure

Our Vision
Achieving beyond expectations

Our Colleges
Anderson | Galileo | Matisse

Our Curriculum
What we offer

The IB MYP
Middle Years Programme

**Specialist
Resource Provision**
How we support SEN students

Student support
Creating a safe, positive and
challenging environment

Learning and Technology
An innovative approach to learning

Post 16
An 'Outstanding' provision

**Careers education and
work-related learning**
Preparing our students for their future

Further Information
Visit us

Welcome



‘Senior leaders
and governors are
ambitious for the
school and
its pupils’
Ofsted 2018

Achieving Beyond Expectations

We are delighted to welcome you to Leigh Academy Longfield. The academy has a long tradition as a popular secondary school choice for local families. It is recognised by Ofsted as being Good with an Outstanding sixth form. Our students achieve well, and we have a positive learning environment as well as strong links within our community. At Leigh Academy Longfield, we care, we are respectful, we believe in each other, we work hard, and we have boundless aspirations. Staff here are ambitious for the school and all its students. The excellent relationships that exist between our students and staff enables us to establish a warm and welcoming community dedicated to learning. Furthermore, our broad and balanced curriculum, underpinned by International Baccalaureate principles, helps to prepare our students to effectively participate in a democratic society. We are extremely proud of our state-of-the-art facilities and the opportunities these afford our students to ‘Achieve Beyond Expectations’.

I sincerely hope that you visit our website so that you can enjoy a virtual tour of our school. I hope also that our website gives you further insights into our vision and ethos. More importantly, I look forward to welcoming you to the physical school so that you can experience what makes us so special.

Felix Donkor,
Principal

A photograph of several students in a classroom. In the foreground, a young woman with blonde hair tied back is looking down at a document. To her left, another student with long dark hair is partially visible. In the background, other students are seated at desks, some looking at their work. The scene is brightly lit, suggesting a modern educational environment.

Introduction

As with all other Leigh Academies Trust secondary academies, Longfield is structured to embrace the 'small school' model of learning. The college structure seeks to foster the strong links that exist within a small community. Excellent communication between the colleges and home is a central part of this process.

The academy is led by a Principal, with a Head of College leading each college of approximately 380 students from years 7-13 together with a team of dedicated staff. All students are organised within a year group tutoring system where students learn from and support each other to achieve the very best outcomes.

The building has discrete facilities for each of the colleges – Anderson, Matisse and Galileo – whilst also housing specialist resources accessed by the whole academy.

On the ground floor of Anderson College is the specialist science facility and presentation space. The academy's provision for some students on the autistic spectrum is also housed in this college.

In the middle of the academy building is Matisse College, which houses the expressive arts classrooms as well as a large plaza area and indoor garden.

At the far end of the building is Galileo College which houses both a professional kitchen and technology rooms. In the centre is another indoor garden. Most of the academy's community facilities are found adjacent to Main Road, including the sports hall, dance studio, multi-gym, learning resource centre, the Helix restaurant and a theatre.

Leigh Academy Longfield is a technology-rich environment. All classrooms have interactive whiteboards and the academy is equipped with multiple designated computer suites. In addition, the college plaza areas have workstations allowing students to access their learning outside of normal lesson time. The academy embraces the use of chromebooks as additional learning tools which allow students to access their learning from home, via online platforms such as Google Classroom.

Teachers use innovative approaches to engage students in their learning and promoting high standards of literacy, numeracy and communication skills in all subject areas. We firmly believe that developing students' awareness and appreciation of the wider environment prepares them to be global citizens.

Our VISION

At Leigh Academy Longfield, we believe in a school community that nurtures unique individuals into being highly successful in their education, whilst supporting the development of every student into a responsible and valued member of their local, national and international communities. Regardless of their background or abilities, we strive to ensure that every student meets our high standards, achieves beyond expectations, and leaves our academy as lifelong learners with outstanding opportunities available to them.

To ensure we support our students' development, Leigh Academy Longfield follows the recognised and highly acclaimed International Baccalaureate's Middle Years Programme in years 7 to 9. This programme spans across eight subject areas and focuses on developing students into communicative, knowledgeable, and caring risk-takers, who are also principled, reflective, inquisitive, open-minded, and balanced thinkers. These attributes are instilled in all our students to support them developing through their education and beyond, and are an excellent foundation for our students as they progress into GCSE, Post-16 and further education.

Our values prepare the international citizens of tomorrow. We aim to develop reflective, inquiring young minds who understand the value of success and are not afraid to fail or take calculated risks in order to learn. Equally, they will be leaders and team players as well as confident, happy individuals who set themselves challenging life goals.

Our core values

Our three core values, which are central to everything we do at Leigh Academy Longfield, are:

Respectful – every student, member of staff and visitor to the academy shows respect to everyone regardless of who they are or their differing viewpoints. We understand that everyone is entitled to be respected at all times and this should be a foundation in everything we do.

Aspirational – every student is encouraged to aspire to be the best person they can be in both their academic and personal development. Our staff aspire for our students to achieve the best in everything they do and will support students where necessary to ensure this.

Caring – we show care for others and care for what we do at all times. We care about our appearance, our success, our relationships with others, our conduct, our work, our environment and so much more, as well as caring about the impact we have on those around us.



Respectful



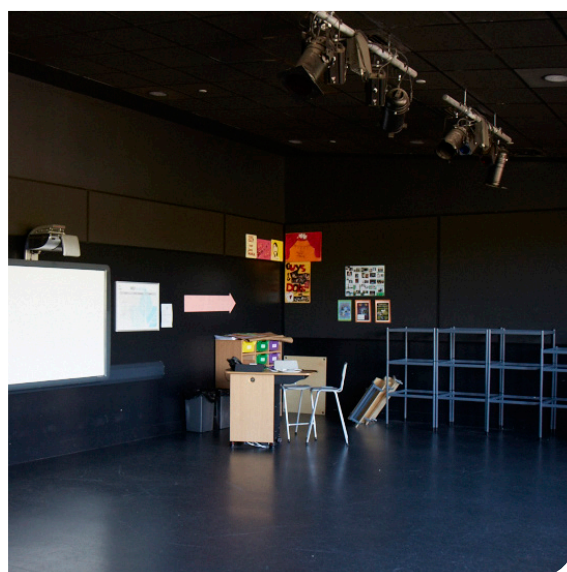
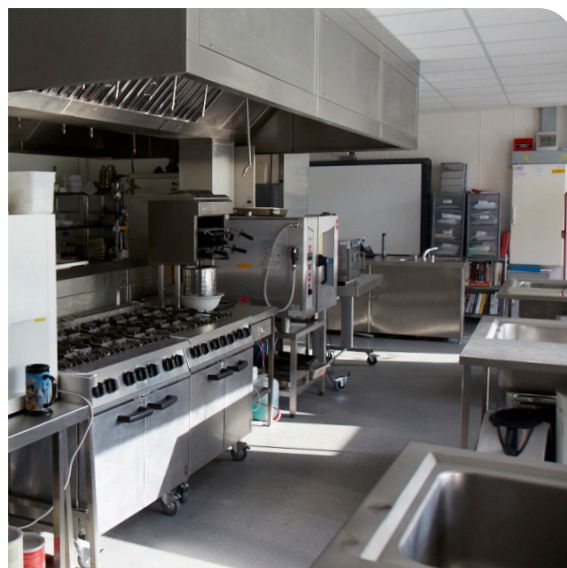
Aspirational



Caring

‘Pupils listen to teachers and each other respectfully, and many pupils are confident to share their ideas’

Ofsted 2018





Our Colleges

Our building has discrete facilities for each of the three colleges - Anderson, Galileo and Matisse - whilst also housing specialist resources accessed by the whole academy.

A Head of College and two Assistant Heads of College lead each college of up to 380 students from years 7-13, together with a team of dedicated staff overseen by the Principal.

Excellent communication between each of the three colleges and home is a central part of the academy's work.

All students are organised within a year group tutoring system where students learn from and support each other to achieve the very best outcomes.

Leigh Academy Longfield is part of Leigh Academies Trust. The academy is structured to embrace the 'small school' model of learning. This ensures that all students are understood as individuals whilst embracing the facilities and opportunities available within a larger school context.

'There is a very effective safeguarding culture in the school. The college system provides good pastoral care and helps to build effective links with parents and carers'

Ofsted 2018

Our Colleges

The academy is organised into three colleges – Galileo (green), Matisse (purple) and Anderson (yellow). Each college is situated in its own strand of the building, and provides pastoral care to two form groups from each year group. Colleges are led by a Head of College, two Assistant Heads of College, and a Student Services team. Students are placed in mixed ability form groups and have dedicated form time each day where they follow our pastoral curriculum. All students, regardless of college, access the same academic and pastoral curriculum across the academy but go to their college areas for their form time and to access Student Services.

At Leigh Academy Longfield, we actively encourage the competitive element of inter-college activity in events and activities throughout the year. Whilst the colleges have their own identities, the emblems together form the triad of Longfield leaves, representing the unity of our community. They are also ordered to match the layout of the college; with Galileo on the left, Matisse in the centre and Anderson on the right.

Each of our colleges are named after pioneers who aspired to achieve great things, irrespective of barriers, linked to the subject disciplines in their college.



Anderson College is named after Dr Elizabeth Garrett Anderson who was the first woman to qualify in Britain as a physician and surgeon. Anderson was also an active member of the women's suffrage movement, campaigning for women's rights. Anderson college is home to the science department.



Galileo College is named after the Italian astronomer Galileo Galilei. During his lifetime, Galileo made groundbreaking advances in the study of space and physics. He demonstrated an exceptional aptitude for engineering and, whilst he did not invent the telescope, he did refine its design and created more powerful iterations over his lifetime. Galileo college houses our technical and engineering subjects.



Matisse College is named after the French artist Henri Matisse. Matisse was known for his very bright and vibrant approach to art, with his leaf print becoming synonymous with his work. Matisse college houses the arts at Leigh Academy Longfield: expressive and creative art departments.



Our Curriculum

At Leigh Academy Longfield we offer a high-quality, broad and balanced education for all students.

In year 7 students are taught in college groups to support a smooth transition from their primary experience.

In years 7, 8 and 9 students follow the International Baccalaureate Middle Years Programme, which encourages them to make practical connections between their studies and the real world.

In years 10 and 11, students will follow examination specifications with targeted teaching and learning to maximise outcomes in the public examinations.

By collaborating with our fellow academies within the Trust we can offer a wide range of courses, whether academic, vocational or technical.

Extra-curricular activities

At Leigh Academy Longfield we offer a wide range of extra-curricular activities and believe that by taking advantage of these opportunities our students broaden their perspective on life.

Clubs offered at the academy include a wide variety of sports, art and science. The academy also boasts a highly successful performing arts department which puts on two large performances each academic year. The academy is also proud to offer the Duke of Edinburgh's Award to students in year 9 upwards, in addition to a wide range of other day and residential trips throughout the year.

The IB Middle Years Programme (MYP)



The International Baccalaureate Middle Years Programme (MYP) provides the framework for the Key Stage 3 curriculum at Leigh Academy Longfield. It provides the academic challenge that encourages students to embrace and understand the connections between traditional subjects and the real world, and become critical and reflective thinkers.

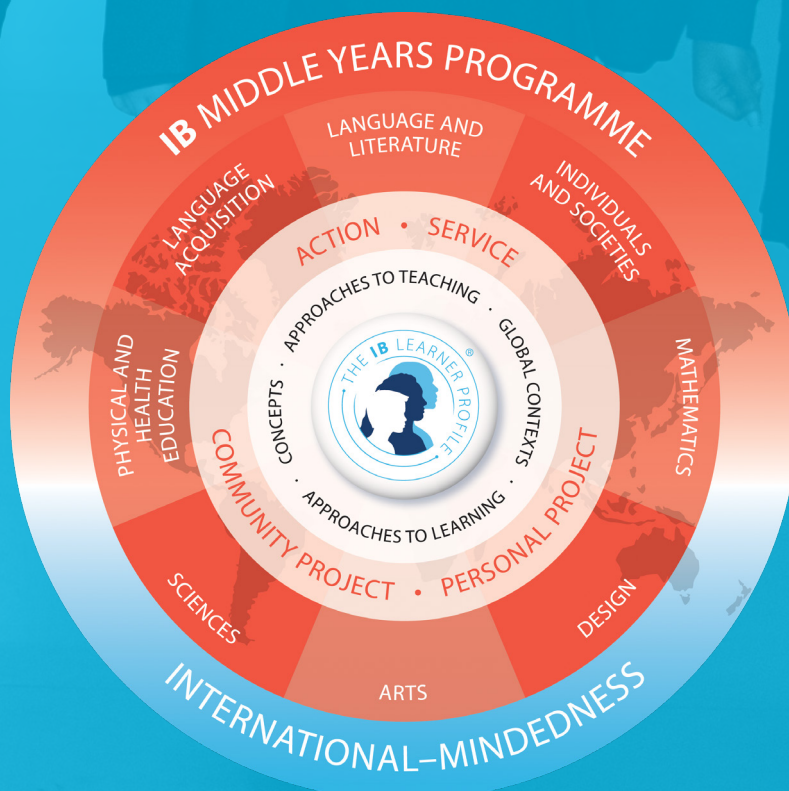
At Longfield, we believe in a community that nurtures unique individuals into becoming the open minded thinkers and principled adults of a diverse society. We have an ethos of high standards that provides the opportunity to aspire and achieve beyond expectations.

We aim to develop enquiring, knowledgeable and caring young people who help to create a better more peaceful world through intercultural understanding and respect, recognising that other people with their differences can also be right.

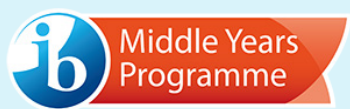
Our values prepare the **international citizens** of tomorrow.

We aim to develop reflective, inquiring young minds who understand the value of success and are not afraid to fail or take calculated risks in order to learn. They will be leaders and team-players as well as confident, happy individuals who set themselves challenging life goals.

Our values are perfectly aligned with the **IB Learner Profile**, which is at the centre of all IB programmes.



The Middle Years Programme



The Programme

- encourages international-mindedness in IB students, starting with a foundation in their own language and culture;
- promotes a positive attitude to learning by challenging students to solve problems, show creativity and resourcefulness, and participate actively in their communities;
- reflects real life by providing a framework that allows students to see the connections among the subjects themselves, and between the subjects and real issues;
- supports the development of communication skills to encourage enquiry, understanding and language acquisition, and to allow student reflection and expression;
- emphasises, through the learner profile, the development of the whole student – physically, intellectually, emotionally and ethically;
- is exciting, innovative, meeting students' personalised needs, satisfying all National Curriculum requirements and providing a framework for all national qualifications and accreditation, including GCSE.



© International Baccalaureate Organisation 2018

MYP Subject Groups

The MYP curriculum is split into eight subject groups:

- Mathematics
- Language and Literature (English)
- Sciences
- Individuals and Societies (Geography, History, RE)
- Language Acquisition (French and Spanish)
- Physical and Health Education
- Design (Technology and ICT)
- Arts (Drama, Music and Art)

The MYP Approach

Teaching and learning in context

Students learn best when their learning experiences have context and are connected to their lives and the world that they have experienced. Using global contexts, students explore human identity, global challenges and what it means to be internationally-minded.

Conceptual understanding

Concepts are big ideas that have relevance within specific disciplines and across subject areas. Students use concepts as a vehicle to inquire into issues and ideas of personal, local and global significance and examine knowledge holistically.

Approaches to learning

A unifying thread throughout all MYP subject groups, approaches to learning provide the foundation for independent learning and encourage the application of their knowledge and skills in unfamiliar contexts. Developing and applying these skills help students learn how to learn.



Specialist Resource Provision

Leigh Academy Longfield contains a specialist provision for students on the autistic spectrum. Within this provision, each student has an Educational Health Care Plan (EHCP) whose primary need is identified as ASD and these places are allocated by Kent County Council (KCC). Students are supported by specialist staff within the provision which comprises four classrooms, each with direct access to a quiet room that students can use. It also has its own changing rooms, a training room, and a kitchen area to support the development of life skills. Students have their own outdoor space, separate from the main academy playground, and this area also accommodates a garden for horticulture activities.

‘Pupils who have special educational needs (SEN) and/or disabilities are making good progress from their starting points. They are cared for well by teachers and other adults so that they can access learning effectively’

Ofsted 2018



Students are based within the provision for all tutor activities and social times, but all access the academy for most lessons, such as English, maths and science. The aim is to enable each student to integrate into main school lessons full time, and to also study the full range of KS3 and KS4 examination courses and enrichment activities. Each student has a carefully planned, personalised timetable which takes account of their individual needs whilst maintaining a significant level of challenge built within it. Spectrum Centre students join everyone else in the main school in taking part in their college activities.

The academy building and facilities have been carefully designed for students with ASD and other learning difficulties to enhance accessibility. Each college has been carefully colour-coded and rooms have specialist signage to enhance accessibility. The acoustic design of the academy also supports all students to learn more effectively.



Student support

Students make greater progress if they have clearly-defined targets that are challenging, yet achievable. Consistent monitoring and a powerful mentoring scheme provide the necessary support, advice and guidance for every student to achieve their potential.

Creating a safe, positive and challenging environment is of the highest priority at Leigh Academy Longfield. Each college has a dedicated pastoral team alongside the College Leadership Team to support students in all aspects relating to attendance, behaviour and wellbeing.

The Special Needs Team work across the academy with individuals and small groups. They engage with external agencies to ensure that all students are supported to make good progress both academically and pastorally.

Learning and Technology

Leigh Academy Longfield is a technology-rich environment. All classrooms have interactive whiteboards and the academy is equipped with cutting-edge technology throughout. Teachers use innovative approaches to engage students across all subject areas, working with technology to bring learning to life. Chromebooks enable students to engage with learning in exciting new ways, whilst also furthering their learning at home.

‘Teachers’ subject knowledge is a major strength of the provision and enables teachers to deepen students’ understanding through highly insightful and effective questioning’

Ofsted 2018




Post 16 at Leigh Academy Longfield

During our most recent Ofsted inspection the inspection team were not alone in recognising the exceptional quality of our sixth form. The post-16 students that they spoke to during their visit were 'highly positive about their sixth form and would wholeheartedly recommend it to others'. This reflects the positive culture developed by leaders and sixth-form staff, who are consistently supportive of students and prepared to 'go the extra mile' whilst also having very high expectations. In return, 'students' behaviour in the sixth form is exemplary. They are punctual, attend well and have excellent personal and social skills'.

The report recognises that leaders of the academy are highly ambitious for all of the students but also that they do not limit that ambition to the outcomes of public examinations; preparing our students for life is equally important to everyone at the academy.

"We are justifiably delighted to have one of the top-performing sixth-form provisions in Kent and receiving the 'outstanding' recognition from Ofsted is the ultimate accolade. The report has recognised that our focus on ensuring that students are on the post-16 courses best suited to their specific needs results in their making excellent progress"

Principal of Leigh Academy Longfield, 2018



Careers education and work-related learning

Leigh Academy Longfield are proud of their comprehensive career education programme which incorporates work-related learning throughout their education.

A student at Leigh Academy Longfield will be prepared for the world of work through education, careers education and work-related learning. We will work with the students to improve self-awareness and challenge their ideas.

Students receive a careers guidance interview during their time at GCSE and also at post-16. Further information about the careers programme at Leigh Academy Longfield can be found on our academy website.

Our careers programme is rich in opportunities for students to engage with potential employers and to discover more about the world of work, including the many different pathways which they can take to achieve their dream careers. We host an annual careers fair and throughout the year welcome in speakers and companies to work with groups of students.

Leigh Academy Longfield careers fairs welcome visitors from a wide range of organisations, including:

- Local further and higher education provisions
- Apprenticeships
- Public service careers
- Hair and beauty careers
- Engineering and construction careers
- Human resources careers
- Local authority careers
- Healthcare and emergency response careers

... plus others!



Leigh Academy
Longfield

Further INFORMATION

Please visit our website

[Leigh Academy Longfield](#)

Please visit our Facebook page to keep up to date with events,
announcements and more

[Leigh Academy Longfield on Facebook](#)



Leigh Academy
Longfield

Main Road
Longfield
Kent DA3 7PH

01474 700 700
info@longfield.latrust.org.uk
leighacademylongfield.org.uk

Achieving Beyond Expectations



LEIGH
Academies Trust

Education for a better world

Chief Executive: Simon Beamish BA (Hons) MSc PGCE NPQH NLE FCCT

Carnation Road, Strood, Rochester, Kent ME2 2SX
01634 412200 | fax: 01634 412201
info@latrust.org.uk | leighacademiestrust.org.uk

Leigh Academies Trust is a registered company (company no 2336587) and an exempt charity.